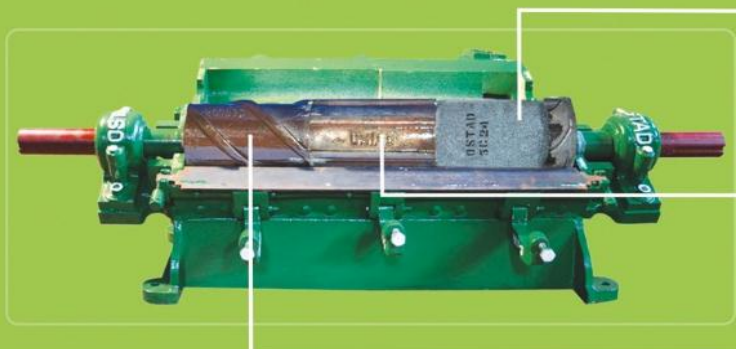


**OSTAD** is the Huller for improved and superior rice!



Stone Cylinder Shell



Cast Iron Cylinder Shell



Cast Iron Cylinder Shell

After years of dedicated effort we have made a breakthrough to be the first to make a huller that does not remove vital vitamins & proteins from the rice.

**OSTAD Huller No. 3 SPECIFICATION**

Type of Machine	Capacity per hour paddy	Driving Pulley	Speed R.P.M.	Power Required
No. 3	1200-1800 KILOS	12"x6"	940-1200	20 H.P. (Recomended)

**CHOPRA MACHINES CORPORATION**  
 27/2C, Strand Road, Kolkata 700 001. West Bengal. India  
 Email : info@ostadricehuller.com  
 Website : www.ostadricehuller.com

Invention Patent & Design Rights, Advanced Technology of Rice Huller covered under Patent Number 884 / Kol / 2014 And Design No 265190







### OSTAD HULLER SPECIFICATION

Type of Huller	Capacity per hour paddy	Driving Pulley	Speed R.P.M.	Power Required
No.3	1200-1800 KILOS	12" x 6"	940-1200	20 H.P. (Recomended)
No.2	1200 KILOS	12" x 6"	940-1200	20 H.P.
No.8	800 KILOS	10" x 5"	900	15 H.P.
No.4	600 KILOS	8" x 4"	1000	10 H.P.
Baby No.5	200 KILOS	6" x 3"	750	5 H.P.

## CHOPRA MACHINES CORPORATION

27/2C, Strand Road, Kolkata - 700 001. West Bengal. India. Email : [info@ostadricehuller.com](mailto:info@ostadricehuller.com) Website : [www.ostadricehuller.com](http://www.ostadricehuller.com)